



Sport & Leisure



How we spend our leisure time is one of the few areas of modern life which we can control. From improving our well-being to relaxing with family and friends, individual ideas about leisure are endlessly diverse. However, whilst our motives for choosing activities vary widely, at the core of our selection is the pursuit of pleasure. Recreational spaces should be welcoming and comfortable as well as suitable for the designated activity.



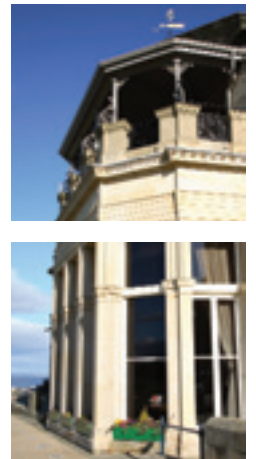
Clubhouse Refurbishment

One of our most prestigious projects in this sector was the extensive refurbishment of this iconic building. The first phase of the project involved a complete remodelling of the basement to provide more spacious and comfortable locker room facilities and a new direct access to and from the first tee of the Old Course.

The improved locker room facilities were created by expanding into areas formerly used as a snooker room and for storage. The number and variety of size and type of lockers were increased to cater for members' preferences. Attractive American White Oak, used for the lockers and other fittings gives a subtly contemporary edge to the traditional interior.

In addition, the project included extensive alterations and upgrading of the members' rooms, offices, kitchens and staff rooms. Throughout the project, maintaining and preserving the heritage of this historic building was paramount. Where contemporary improvements such as a new air conditioning system were required, internal units were installed in fittings designed to blend seamlessly with the traditional character of the building. External units were accommodated in a newly modified roof structure.

Sport & Leisure
The Royal & Ancient Golf Club of St. Andrews



'Maintaining and preserving the heritage of this historic building was paramount.'

Wellwood Leslie has provided architectural services for a number of further projects including refurbishment of the R&A guest house, Waldon House, office refurbishment and remodelling, the creation of a new shop adjacent to old course 18th green, British Golf Museum and equipment testing laboratories for R&A Rules.